

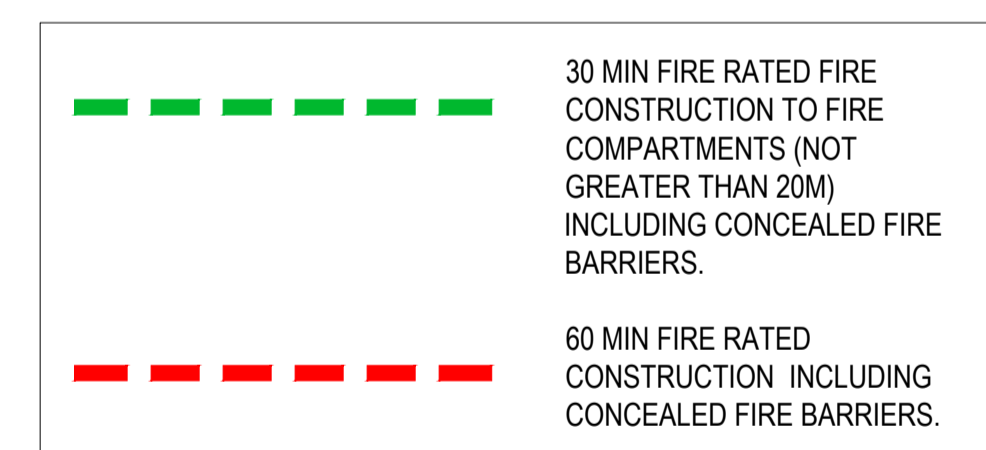
DRAWING NOTES
 COPYRIGHT ©
 This drawing and the details herein are the copyright of MBH Design Studio Ltd. and must not be reproduced, altered or passed to any third party without prior written consent.
 This drawing has been produced for the project listed below, is submitted in support of this application application to the Local Planning Authority and is not intended for use by any other person or for any other purpose.
 Every effort has been made to ensure the accuracy of these drawings, however MBH Design Studio Ltd. accept no responsibility for any discrepancies arising from the reuse of survey information and preliminary drawings commissioned by the Applicant from others.

- GENERAL NOTES**
- ESCAPE LIGHTING**
 AS DEFINED BY BRITISH STANDARD 5266:PART 1 (2016) SHALL BE PROVIDED TO THESE PREMISES. SUFFICIENT TO ENABLE PERSONS TO EXIT BUILDING IN THE EVENT OF FAILURE OF NORMAL LIGHTING
- FIRE FIGHTING EQUIPMENT**
 SHOULD BE PROVIDED AS DETAILED AND IN ACCORDANCE WITH BRITISH STANDARD 5306:PART 3 (2017)
- FIRE FIGHTING SYSTEM**
 TO BE PROVIDED WITH FIRE WARNING SYSTEM COMPLYING WITH BRITISH STANDARD 5839:PART 1 (2017)
- FIRE ALARM SYSTEM**
 TO BE INSTALLED IN ACCORDANCE WITH BS 5839:PART 1 (2017)
- NOTICES:**
 A 'RUNNING MAN' SIGN SHALL BE INSTALLED ABOVE DOORS IN ACCORDANCE WITH BS5499
- NOTICES:**
 FIRE SAFETY SIGNS SHALL BE INSTALLED ABOVE DOORS IN ACCORDANCE WITH BS5499:PART 1
- PROVIDE EXIT BUTTONS AND BREAK GLASS POINTS AT 1200MM AFFL TO ALL AREAS WITH ACCESS CONTROL.
 - PROVIDE FIRE BARRIER TO CEILING / FLOOR VOIDS AT 20M CENTRES MAXIMUM.
 - ALL SERVICE PENETRATIONS IN COMPARTMENT WALLS, FLOOR & SOFFIT TO BE FIRE-STOPPED WITH THE APPROPRIATE FIRE DAMPERS.
 - PROVIDE STATUTORY FIRE/WARNING SIGNS TO MOE DOORS AS REQUIRED.
 - PROVIDE FIRE DETECTION AND ALARM SYSTEM TO BS 5839 PART 1 AND TO L1 STANDARD.
 - PROVIDE ESCAPE LIGHTING TO BS 5266 PART 1.
 - SPREAD OF FLAME TO WALL AND CEILING SURFACES IN THE SALES BUILDING SHOULD BE NOT LESS THAN CLASS 1 AND ESCAPE CORRIDORS NOT LESS THAN CLASS 0.

PART B - FIRE SAFETY TRAVEL DISTANCE (TD) - Reference Table 2.1, page 14 and Diagram 2.2, page 15 of Approved Document B - Vol. 2, where 18m in single direction and 45m in more than one direction have been used to assess the means of escape.

PART B - FIRE SAFETY EXIT SIGNS
 5.28 Every doorway or other exit providing access to a means of escape, other than exits in ordinary use (e.g. main entrances), should be distinctively and conspicuously marked by an exit sign in accordance with BS ISO 3864-1 and BS 5499-4.

PART B - FIRE SAFETY ESCAPE ROUTES AND EXITS
 Final exit doors should have simple fastenings able to be operated quickly in an emergency, e.g., panic bar/push pad door release, designed to BS EN 1125.



FIRE EXIT SIGNAGE DETAILS

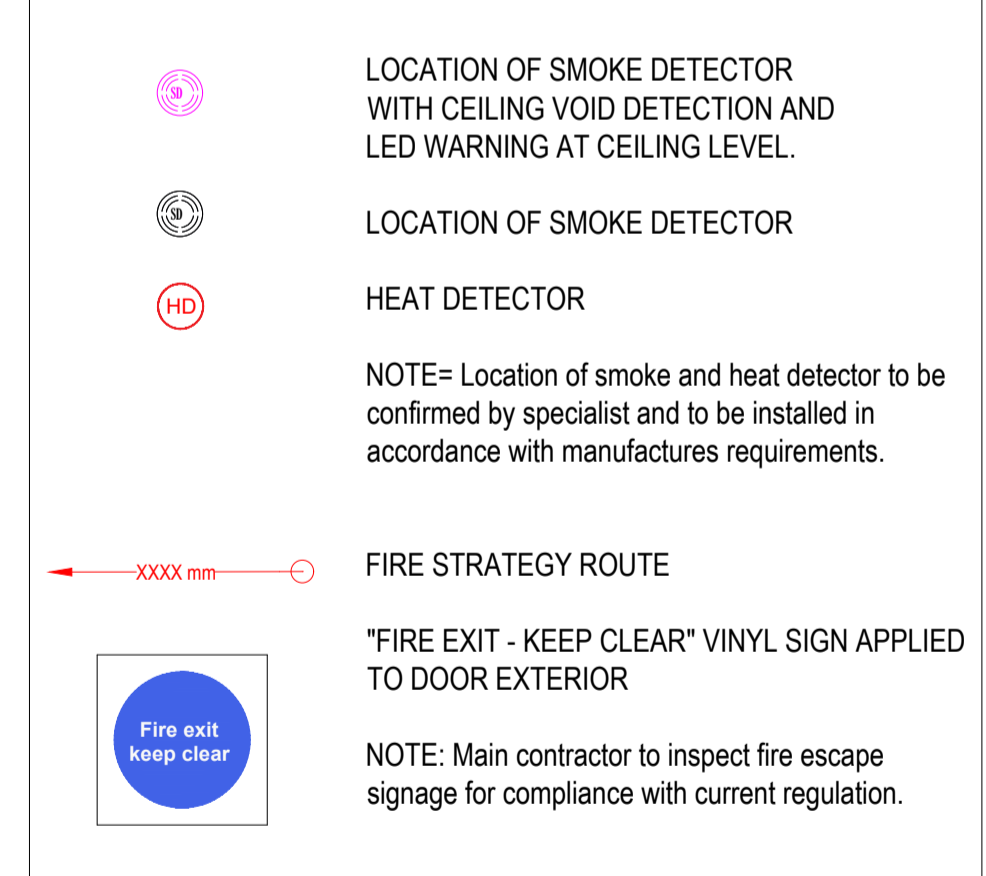
A) WALL MOUNTED SIGN:	
B) SUSPENDED SIGN:	

ADHESIVE BACKED OR DRILLED FOR FIXING. 50MM ABOVE DOORS/OPENINGS

EACH COMPLETE WITH 2NO S/S STEEL WIRES AND NECESSARY FIXINGS. HEIGHT AFFL TO MATCH OTHER INTERNAL SIGNAGE

ALL FIRE SIGNS MUST CONFORM TO BSS499-1:2002, BS5499-4:2016, BS5499-5, 6:2002, BS5499-11:2002 & BS180 7010 2020

EMERGENCY FIRE EXIT DIRECTION SIGNS OVER ESCAPE ROUTE DOORS MUST BE ILLUMINATED



- FIRE FIGHTING EQUIPMENT**
- FIRE FIGHTING EQUIPMENT LOCATION
 - AQUEOUS FILM FORMING FOAM 6 LITRE 27A-AFFF
 - CO2 2KG
- FIRE EXTINGUISHER PATTERSSING - 25 x 150 x 600 mm LONG SOFTWOOD CHAMFERED PATTERSS FIXED AT 1m TO TOP OF PATTERSS FROM FFL

